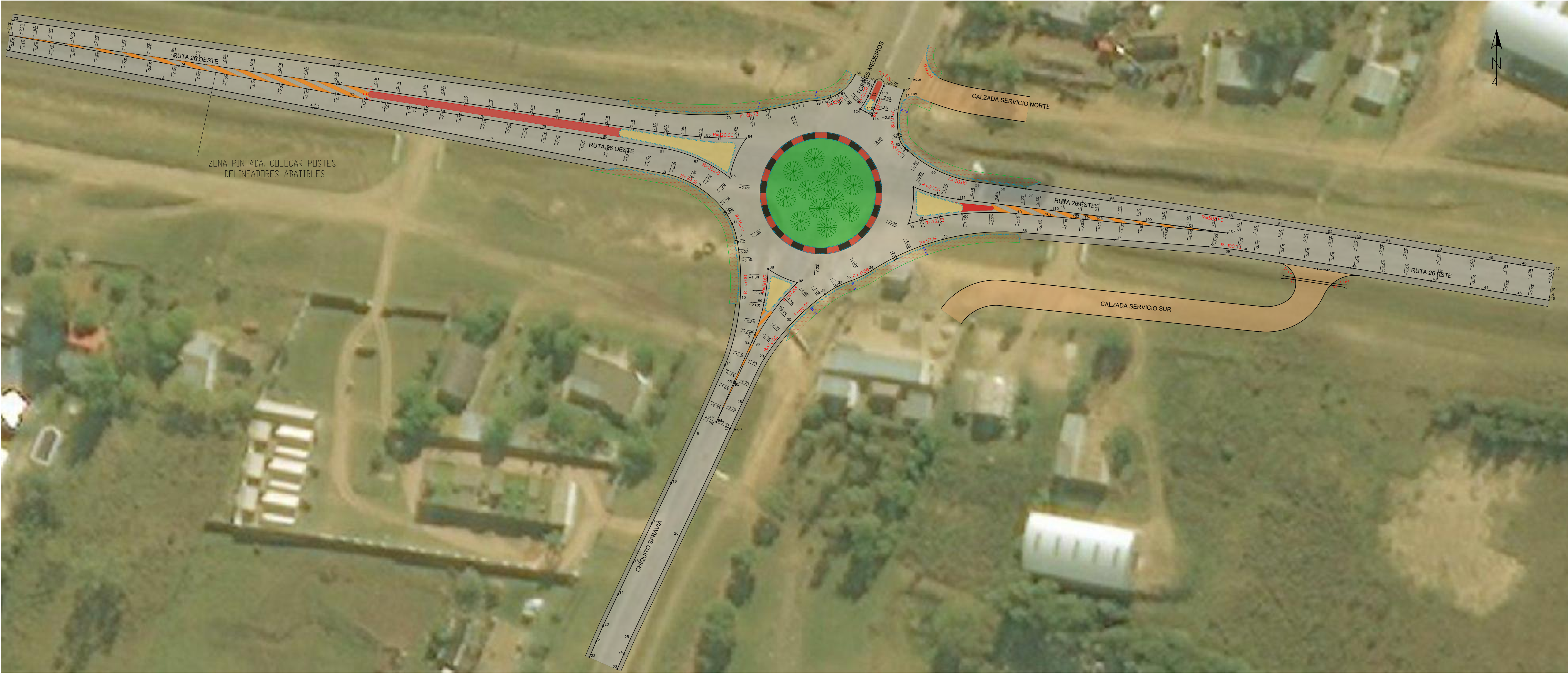
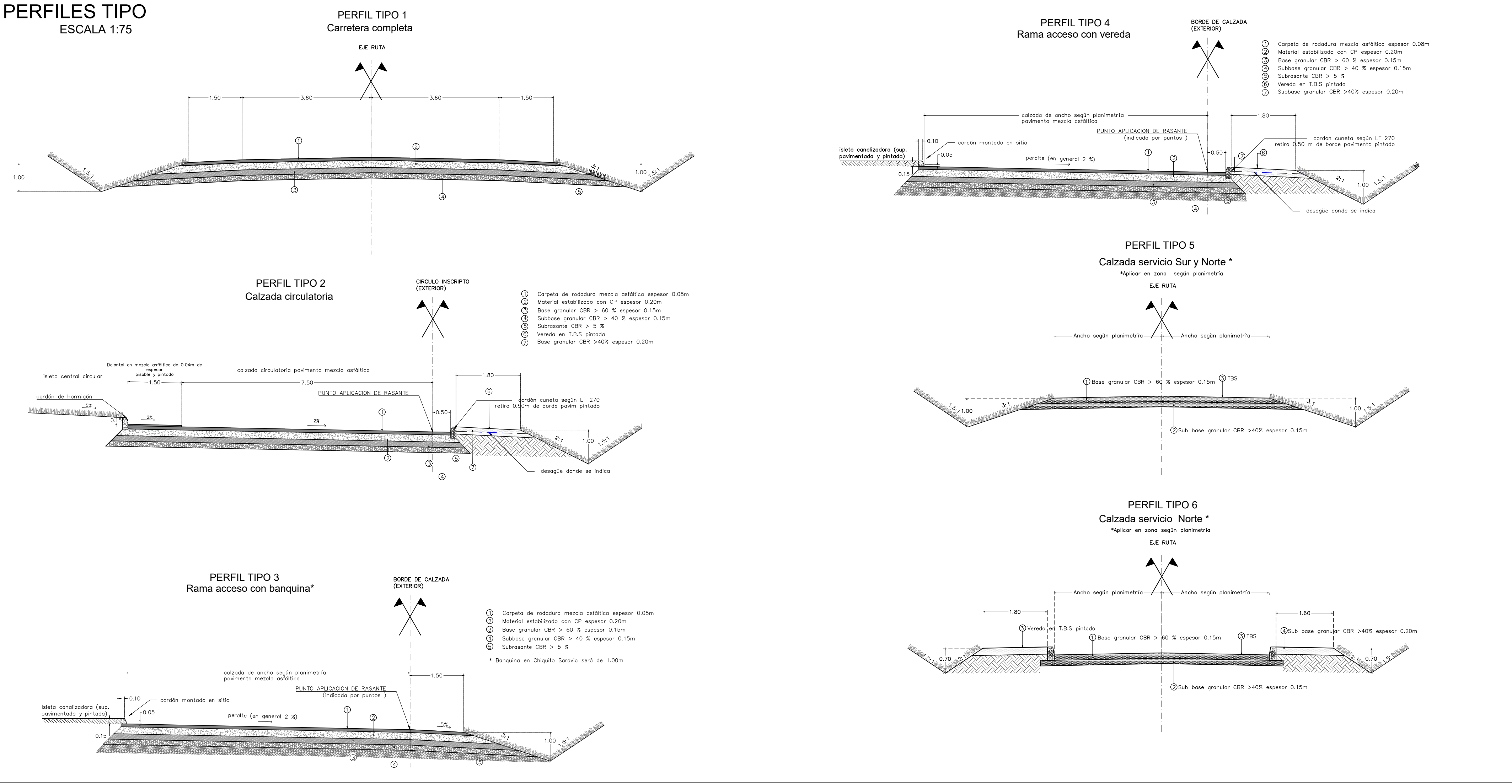


PLANIMETRÍA DE PUNTOS  
ESCALA 1:500



PERFILES TIPO  
ESCALA 1:75



DETALLE DE ISLETAS  
ESCALA 1:250

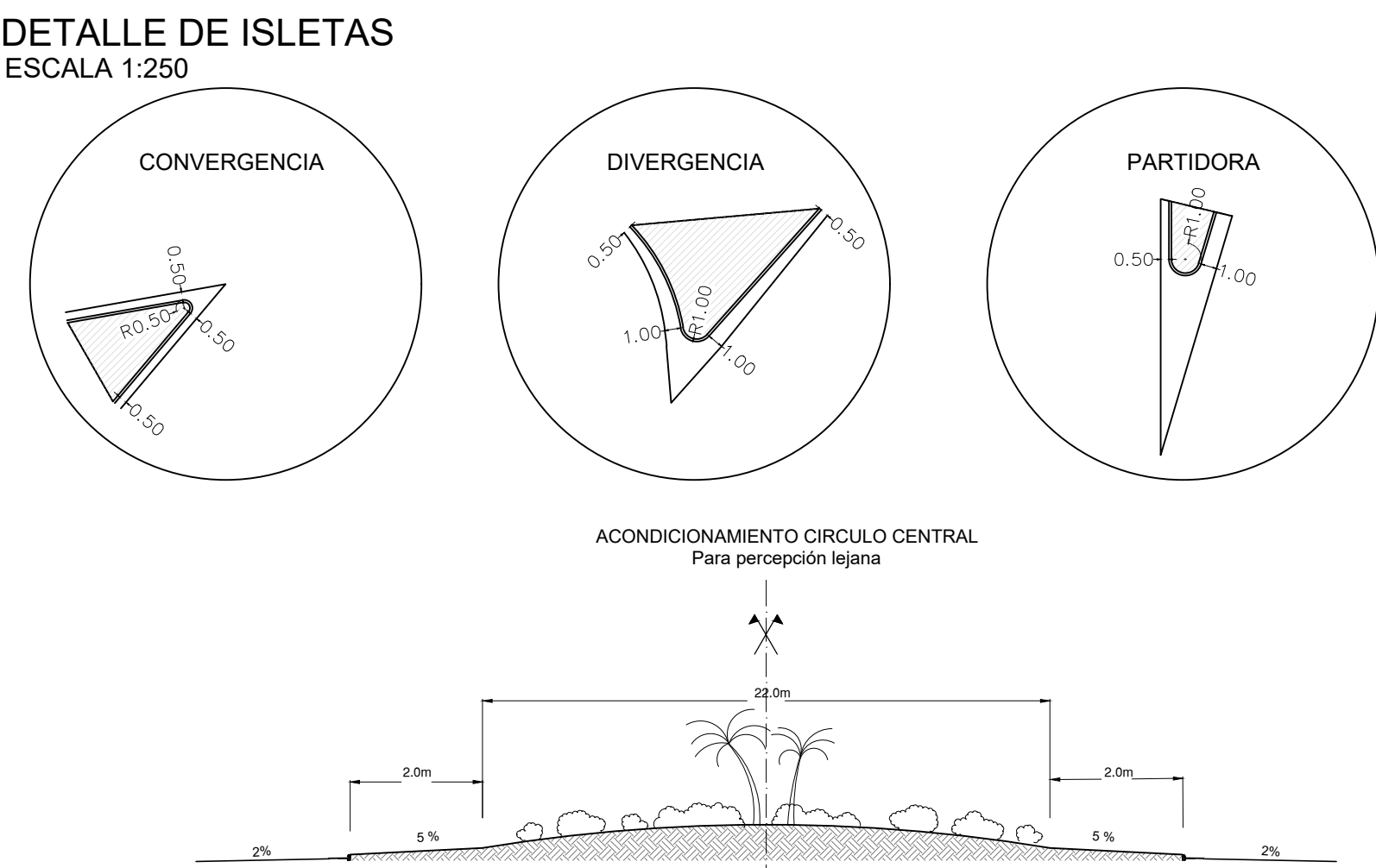


Tabla de Puntos				Tabla de Puntos				Tabla de Puntos				Tabla de Puntos			
Punto #	X	Y	Z	Punto #	X	Y	Z	Punto #	X	Y	Z	Punto #	X	Y	Z
1	594502.71	6488637.33	156.71	32	594659.36	6488577.71	162.69	63	594713.02	6488613.07	162.24	94	594670.49	6488545.44	164.24
2	594502.05	6488633.80	156.64	33	594702.82	6488579.04	162.68	64	594713.56	6488618.81	161.96	95	594679.01	6488555.07	163.86
3	594538.41	6488626.97	157.92	34	594707.36	6488581.44	162.64	65	594715.07	6488624.36	162.10	96	594679.52	6488564.57	163.39
4	594574.76	6488620.14	159.13	35	594724.37	6488588.90	162.35	66	594703.49	6488628.00	162.05	97	594685.27	6488573.46	162.83
5	594575.07	6488620.08	159.14	36	594742.87	6488590.52	162.55	67	594699.76	6488623.66	161.82	98	594689.75	6488578.62	162.67
6	594575.39	6488620.02	159.15	37	594765.29	6488588.81	162.48	68	594694.32	6488621.86	161.66	99	594716.12	6488592.58	162.54
7	594616.58	6488612.31	160.30	38	594787.45	6488587.13	162.57	69	594688.91	6488620.92	161.51	100	594728.82	6488594.93	162.53
8	594657.77	6488604.60	161.18	39	594791.48	6488586.74	162.59	70	594673.12	6488618.59	161.36	101	594741.74	6488595.00	162.63
9	594665.95	6488601.43	161.36	40	594795.48	6488586.19	162.60	71	594656.86	6488619.31	161.11	102	594748.28	6488594.45	162.65
10	594672.47	6488595.58	161.92	41	594821.22	6488582.10	162.50	72	594579.69	6488630.10	159.23	103	594754.85	6488593.90	162.68
11	594674.25	6488592.61	162.14	42	594828.10	6488581.00	162.46	73	594503.22	6488640.90	156.63	104	594757.64	6488593.65	162.66
12	594675.30	6488589.31	162.20	43	594840.30	6488579.01	162.36	74	594542.92	6488630.10	158.13	105	594760.43	6488593.40	162.67
13	594676.22	6488575.55	162.67	44	594852.51	6488577.02	162.24	75	594583.12	6488622.87	159.46	106	594776.17	6488591.07	162.69
14	594672.56	6488559.02	163.72	45	594860.41	6488575.72	162.15	76	594591.16	6488621.46	159.70	107	594791.99	6488590.39	162.70
15	594665.08	6488542.32	164.33	46	594868.30	6488574.43	162.05	77	594599.21	6488620.12	159.92	108	594782.01	6488591.78	162.72
16	594659.77	6488530.99	164.67	47	594869.46	6488581.53	162.03	78	594613.95	6488617.71	160.31	109	594772.11	6488593.15	162.72
17	594655.25	6488521.55	164.88	48	594861.57	6488582.83	162.15	79	594628.68	6488615.31	160.67	110	594750.00	6488595.78	162.69
18	594655.74	6488512.10	165.04	49	594853.67	6488584.12	162.24	80	594643.16	6488612.34	160.99	111	594727.89	6488599.40	162.56
19	594647.15	6488504.56	165.12	50	594841.46	6488586.71	162.36	81	594657.64	6488610.58	161.27	112	594722.49	6488599.48	162.49
20	594643.57	6488493.03	165.17	51	594829.25	6488588.10	162.46	82	594666.11	6488608.07	161.42	113	594717.32	6488601.40	162.47
21	594641.96	6488483.33	165.19	52	594822.36	6488589.21	162.54	83	594673.67	6488603.52	161.78	114	594707.51	6488618.24	162.07
22	594640.34	6488469.63	165.22	53	594815.46	6488590.32	162.61	84	594677.66	6488612.93	162.07	115	594708.02	6488620.06	162.06
23	594646.95	6488466.75	165.22	54	594803.63	6488592.19	162.73	85	594667.72	6488613.17	161.42	116	594709.41	6488621.83	162.06
24	594648.53	6488460.40	165.20	55	594791.79	6488594.06	162.82	86	594657.84	6488614.23	161.25	117	594708.79	6488623.60	162.10
25	594650.12	6488449.04	165.17	56	594763.69	6488598.09	162.89	87	594580.28	6488625.78	159.36	118	594710.28	6488625.37	162.15
26	594661.76	6488518.45	164.88	57	594744.01	6488600.86	162.74	88	594682.80	6488615.84	162.52	119	594709.70	6488626.90	162.20
27	594673.77	6488543.96	164.17	58	594737.84	6488601.72	162.66	89	594691.84	6488613.92	162.89	120	594708.17	6488626.34	162.16
28	594676.92	6488550.63	163.98	59	594731.87	6488602.57	162.57	90	594679.64	6488616.25	163.33	121	594707.38	6488624.64	162.11
29	594681.91	6488560.65	163.42	60	594722.98	6488605.28	162.37	91	594678.39	6488615.35	163.08	122	594706.58	6488622.94	162.07
30	594688.39	6488568.95	162.78	61	594715.34	6488610.57	162.32	92	594678.91	6488614.46	163.42	123	594705.71	6488621.83	162.02
31	594696.33	6488575.86	162.63	62	594714.45	6488611.72	162.32	93	594674.70	6488554.96	163.88	124	594704.64	6488619.84	161.98

PROYECTO EMPALME RUTA 26 Y TORRES MEDEIROS. TACUAREMBÓ

Planimetría de puntos y perfiles tipo

Relevamiento:

ESCALAS INDICADAS

Encargado Despacho

Ing. Magdalena Pastorni  
Jefe División Proyectos de Carreteras

Proyecto N° : 11334

Lámina N° : 2

Archivo: PROYECTO RUTA 26 Y CALLE MEDEIROS.dwg

Fecha: 1 diciembre 2021

Ing. Luis Silva

MINISTERIO DE TRANSPORTE  
Y OBRAS PUBLICAS



Dirección Nacional de Vialidad  
División Estudios y Proyectos  
Departamento de Carreteras

